

Atomic Firmware Update Instructions:

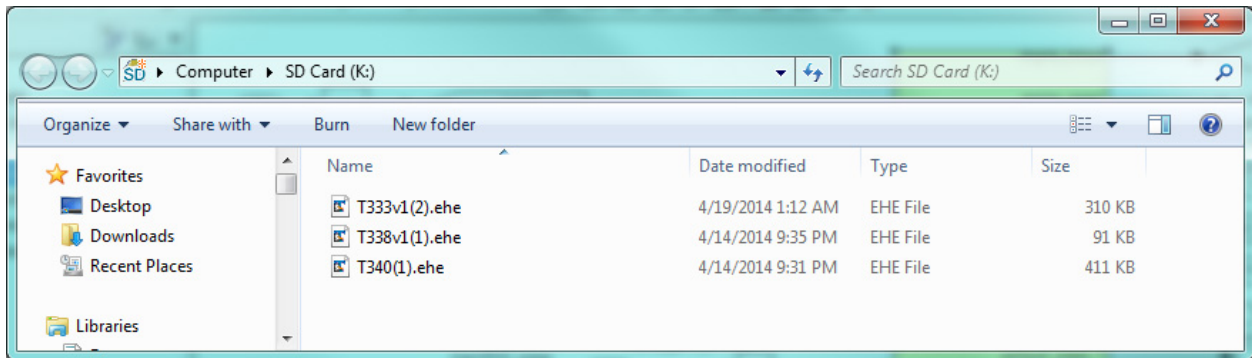
In order to update the Atomic EFI you will first need to download the updated files from <https://www.msperformance.com/support/resources/>

(Right click and choose "Save Target As" if it doesn't download automatically)

Here is also a YouTube video to help with updating:

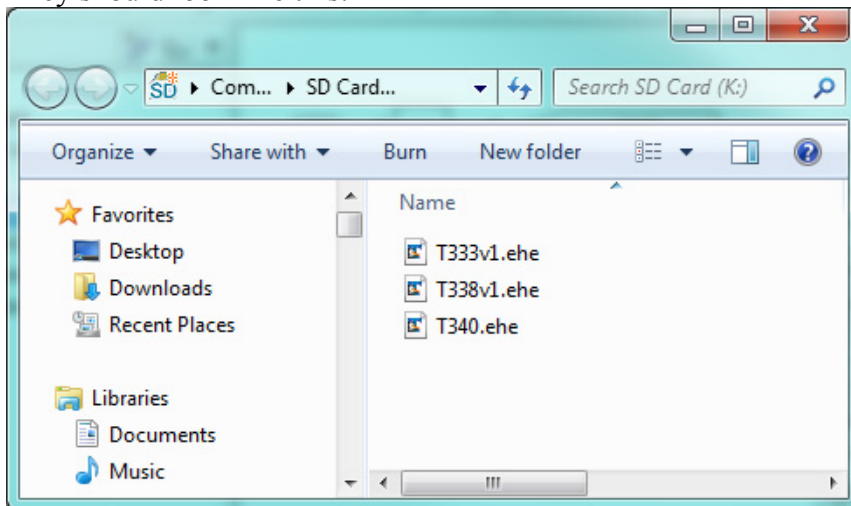
<https://youtu.be/P0pfXcQk9U8>

NOTE BEFORE PROCEEDING:



Make sure your card does not look like this. This is from a customer that sent his handheld in because it would not update (the handheld said the firmware was bad and needed updated). It updated just fine when I deleted the (1) and (2) after the file names. This is caused by Windows if you have previously downloaded an update and it is still in your downloads folder. Just something to look out for if you are doing any updates.

They should look like this:



ALL THREE UPDATES MUST BE DONE SIMULTANEOUSLY

- 1.** The update will reset all settings in the Atomic EFI.
 - a.** Be sure that you make note of all settings in the Initial and Advanced Set-ups prior to performing the update.
- 2.** Download the update files from AtomicEFI.com
 - a.** Be sure they are saved in a place that you will find them (the desktop is often the best place to save them).
 - b.** DO NOT rename the files, the Atomic EFI will only recognize files with the names assigned by MSD.
- 3.** Transfer the files to the Micro-SD Card that came with the Atomic.

You will need an SD Card reader for this – if you do already not have a reader, they can be found at most electronics stores for less than \$10.

- a.** Open the Micro-SD card's window on your computer.
 - b.** Drag and drop the MSD files into the folder.
 - c.** The files must remain in the main folder do NOT put them in a sub-folder.
- 4.** Move the Micro-SD card to the Atomic EFI's Handheld
- 5.** Ensure the Handheld is plugged in to the Power Module
- 6.** Turn the vehicle's ignition switch to Key-On
 - a.** Do not start the engine
- 7.** At this time the Atomic will automatically update the Handheld.
 - a.** This process will take approximately 30 seconds, do not remove power.
- 8.** When the handheld update is complete you will be prompted to update the Atomic ECU as well.
 - a.** Use the Handheld joystick see "YES" by pushing the joystick up.
 - b.** Push the joystick in to accept.
- 9.** At this time the Atomic ECU will be updated.
 - a.** This process will take approximately 30 seconds.
 - b.** The beginning of this process will display "Erasing" – this is normal, do not remove power.
 - c.** The handheld's screen will notify you when the update is complete.

10. Use the handheld's joystick to go back (left) to the main menu.
11. Input all previous settings for the Initial and Advanced setups.
12. Enjoy your updated Atomic EFI.

You can check to see that the Atomic update is successful by looking at the version numbers on the Handheld. To do so go to:

- Display setup
- Firmware versions
- Dash – 2.0.7
- EFI – 1.2.12
- P.M. – 1.0.9

If you have any problems, please contact our experts at 915-855-7123